

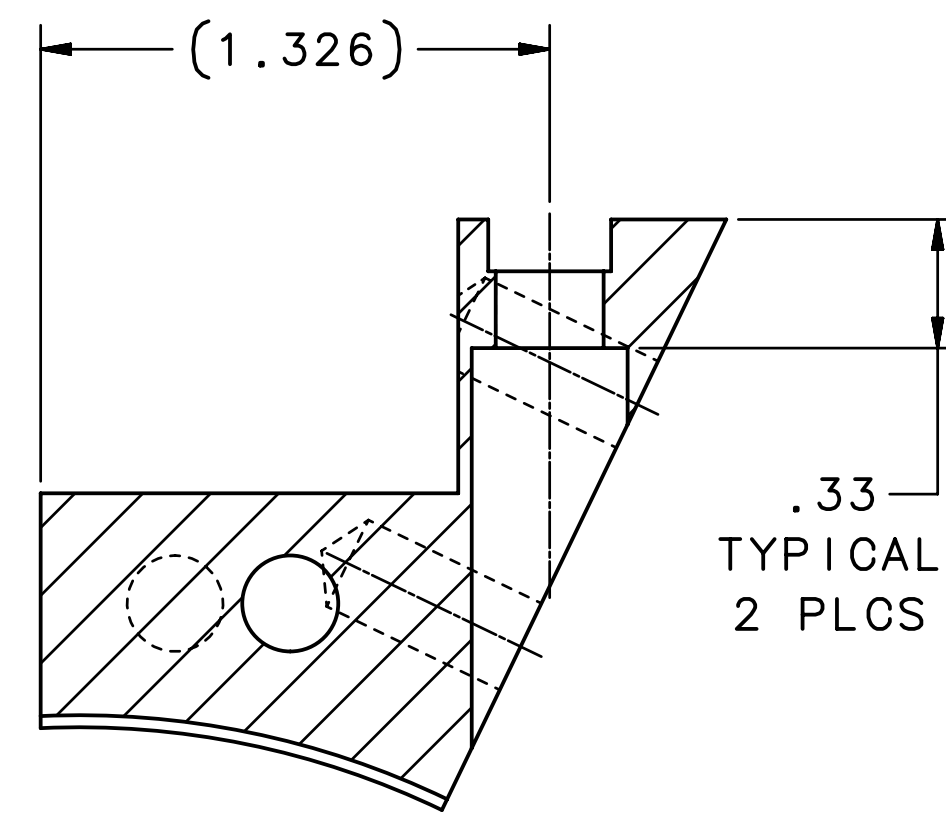
REVISION HISTORY		
ZONE	REV	DESCRIPTION

Annotation: The dimension in parenthesis is what is in the GDML.
 Highlighted in yellow are checked.

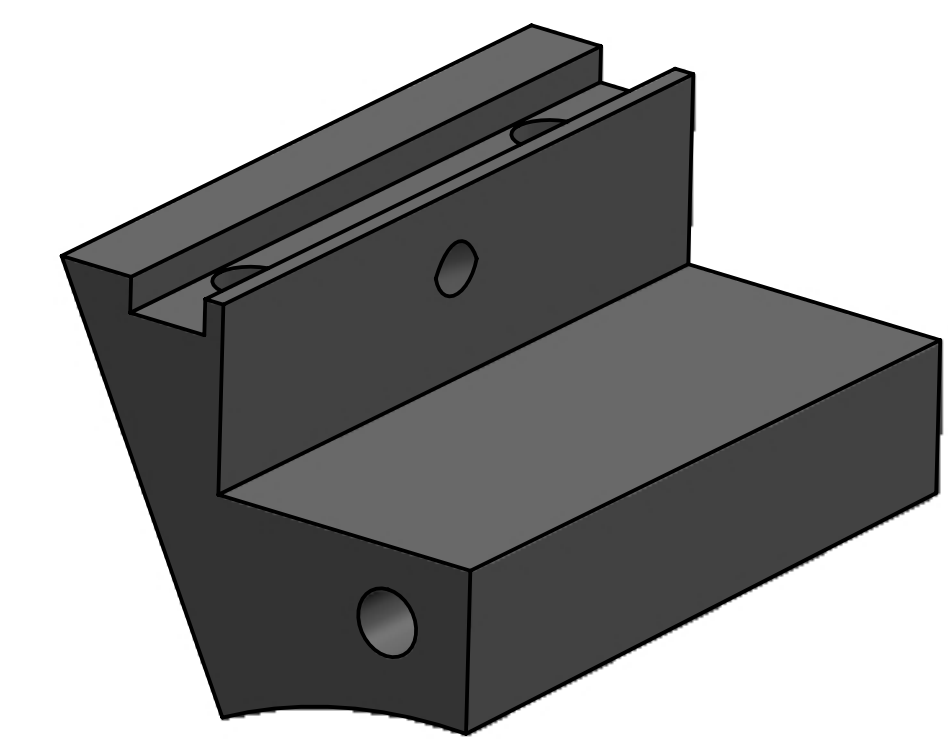
BEAM →

"Z"
 (376.217)

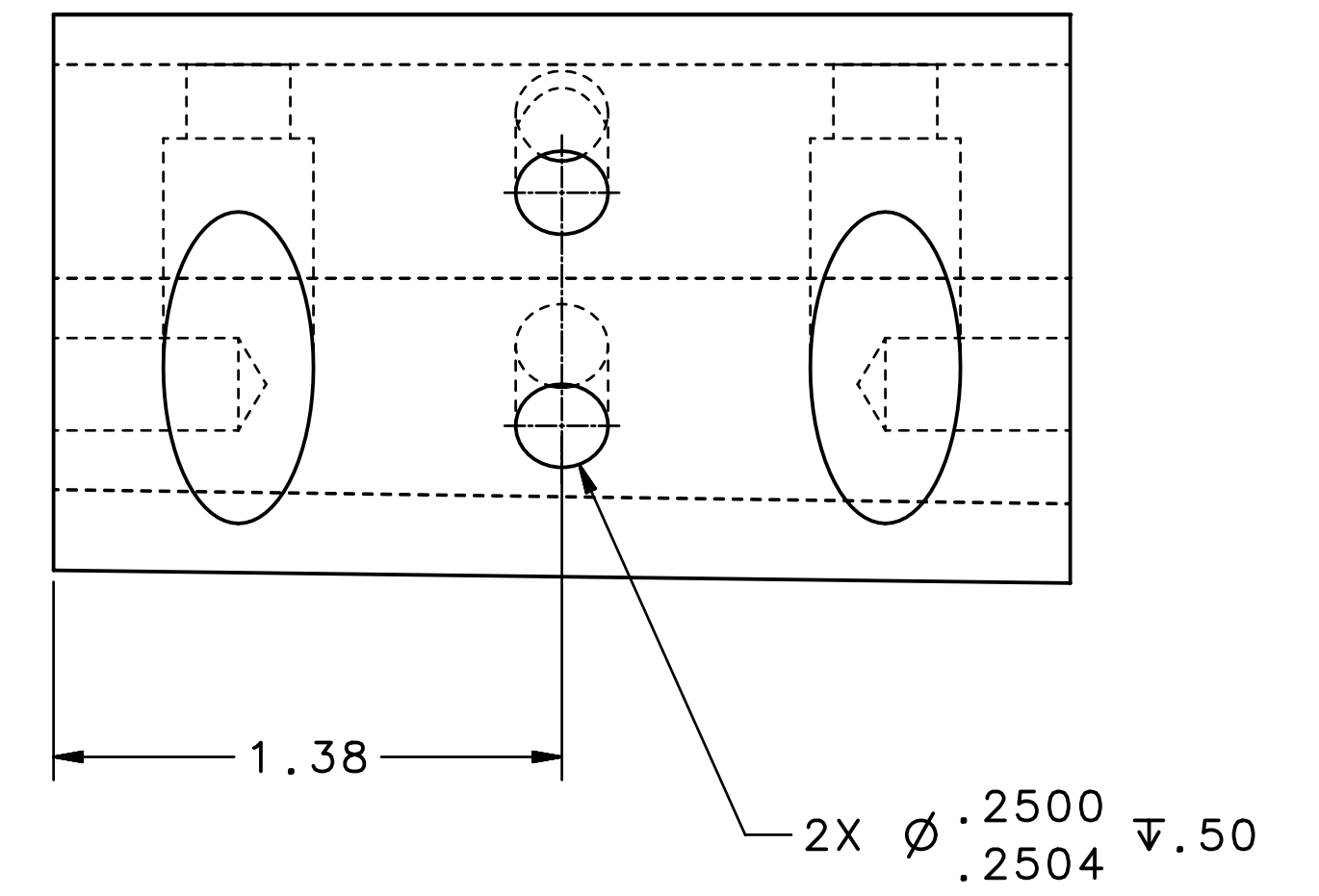
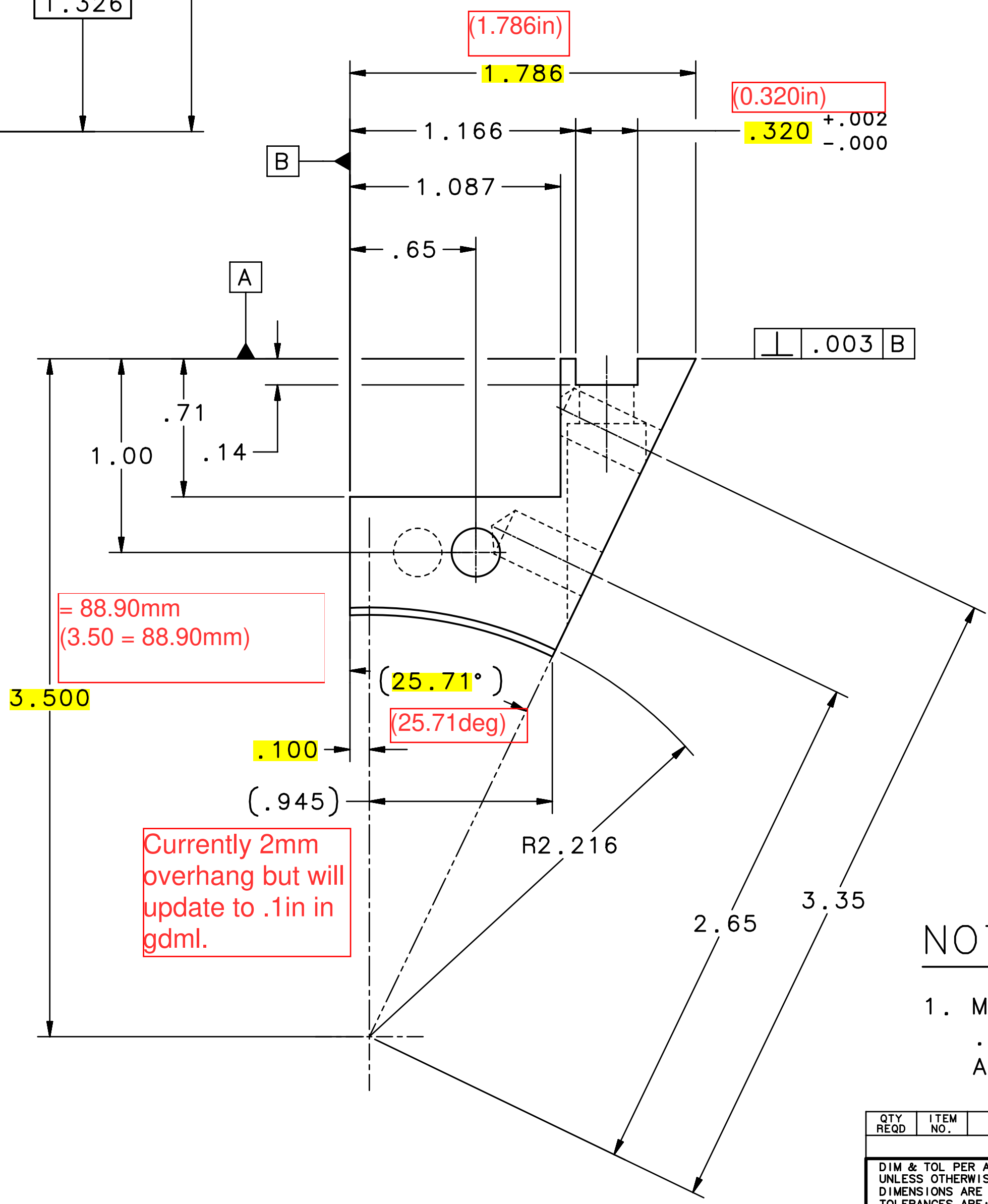
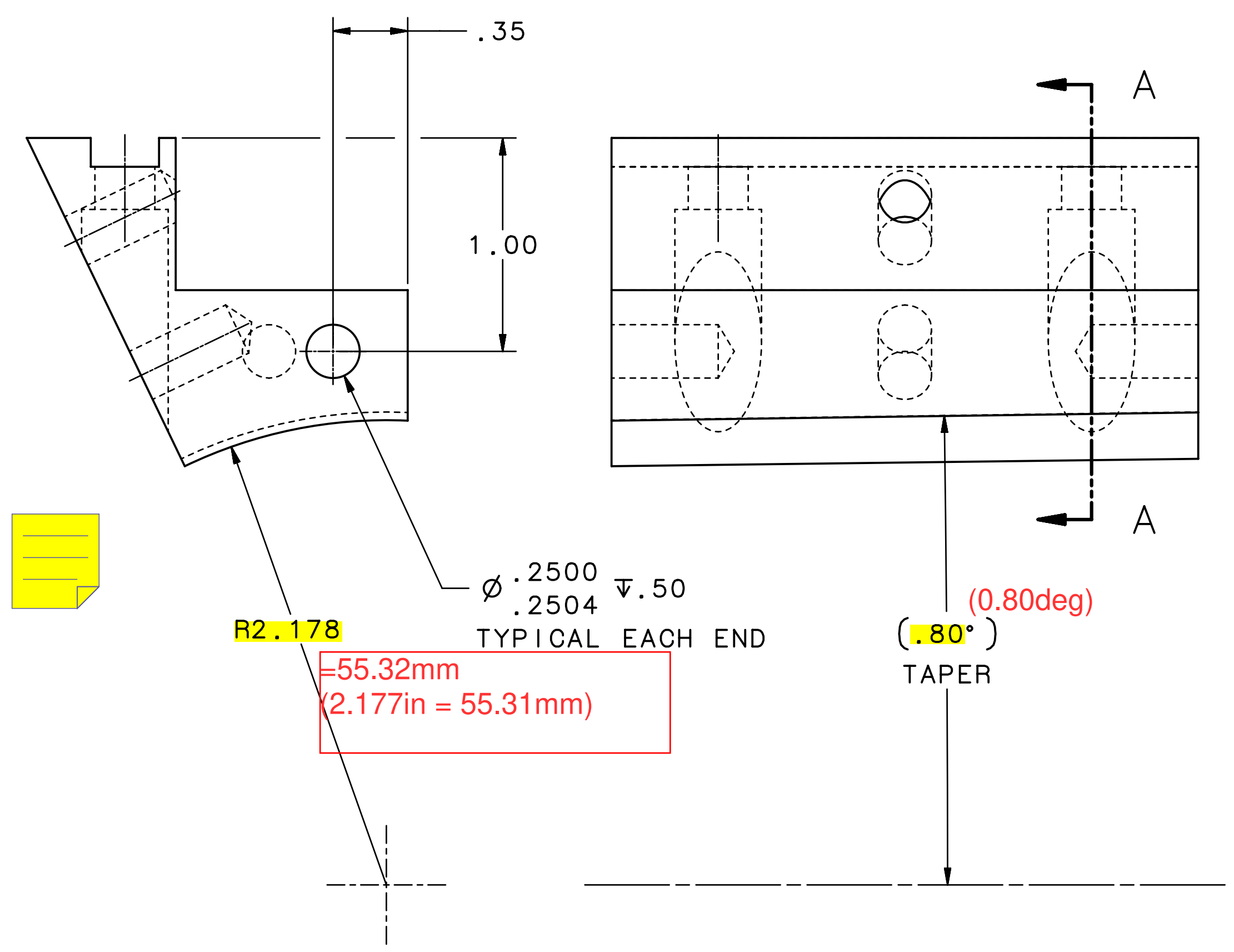
2X $\varnothing .281^{+.009}_{-.002}$ THRU
 $\perp \varnothing .406 \nabla$ SHOWN
 (FAR SIDE)
 $\varnothing \varnothing .020$ A B C



SECTION A-A



ISOMETRIC VIEW



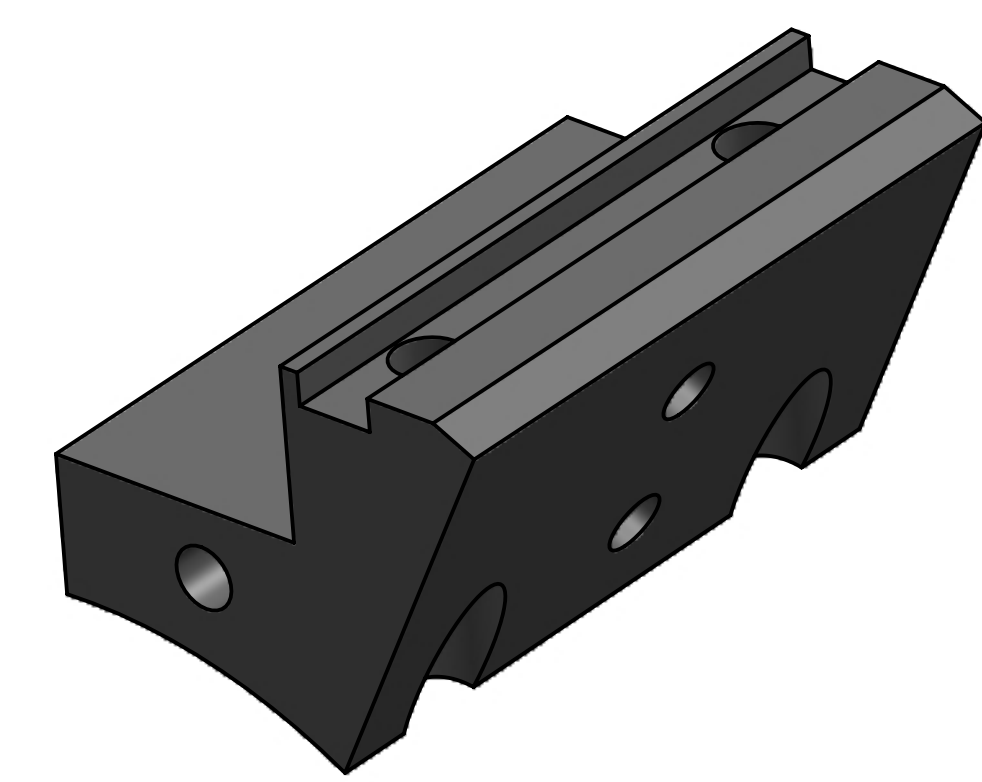
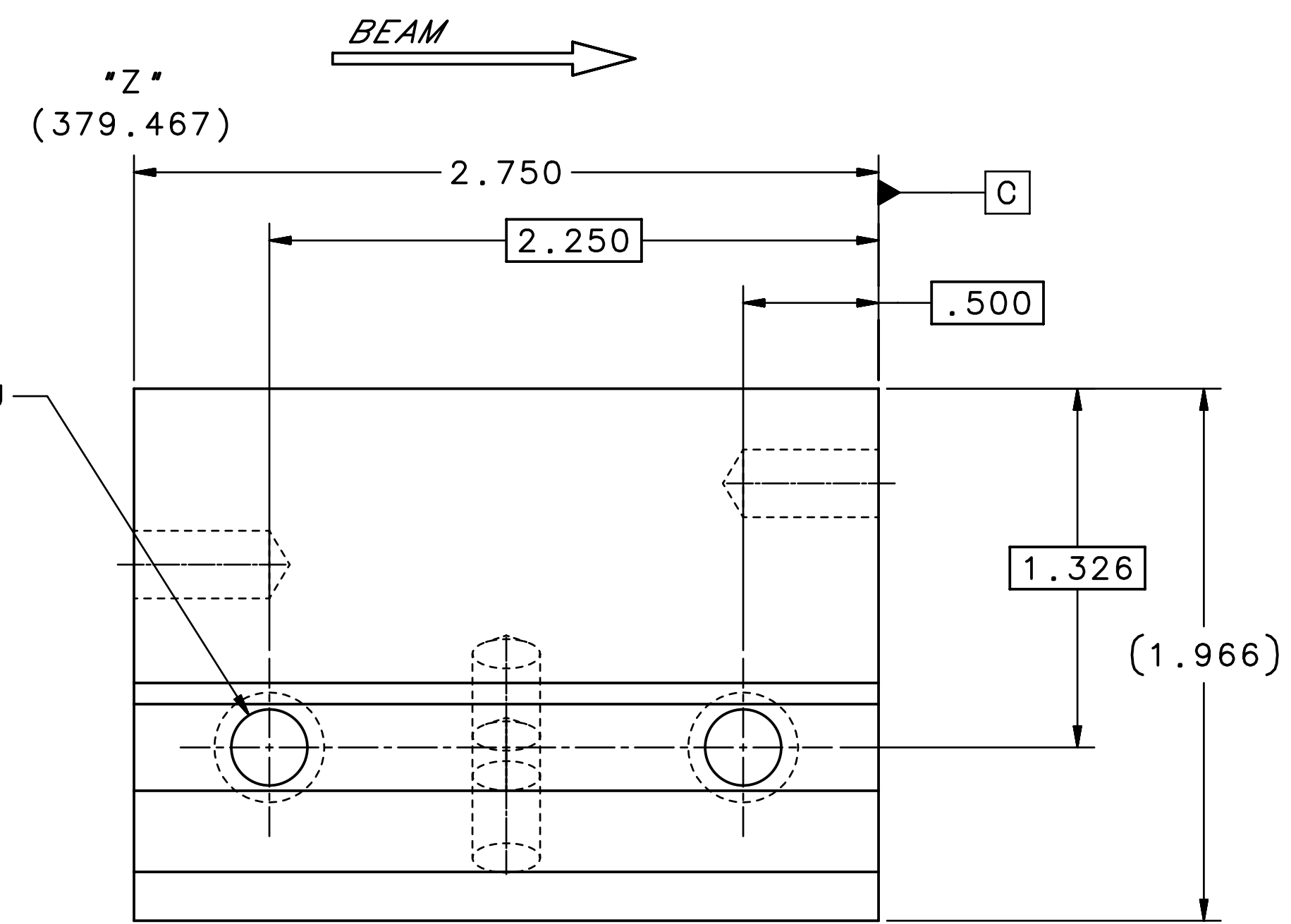
NOTES:

- MATERIAL TO HAVE NO MORE THAN .001% Fe AND NO MORE THAN .001% Ni. ACTUAL MATERIAL CERTIFICATION IS REQUIRED

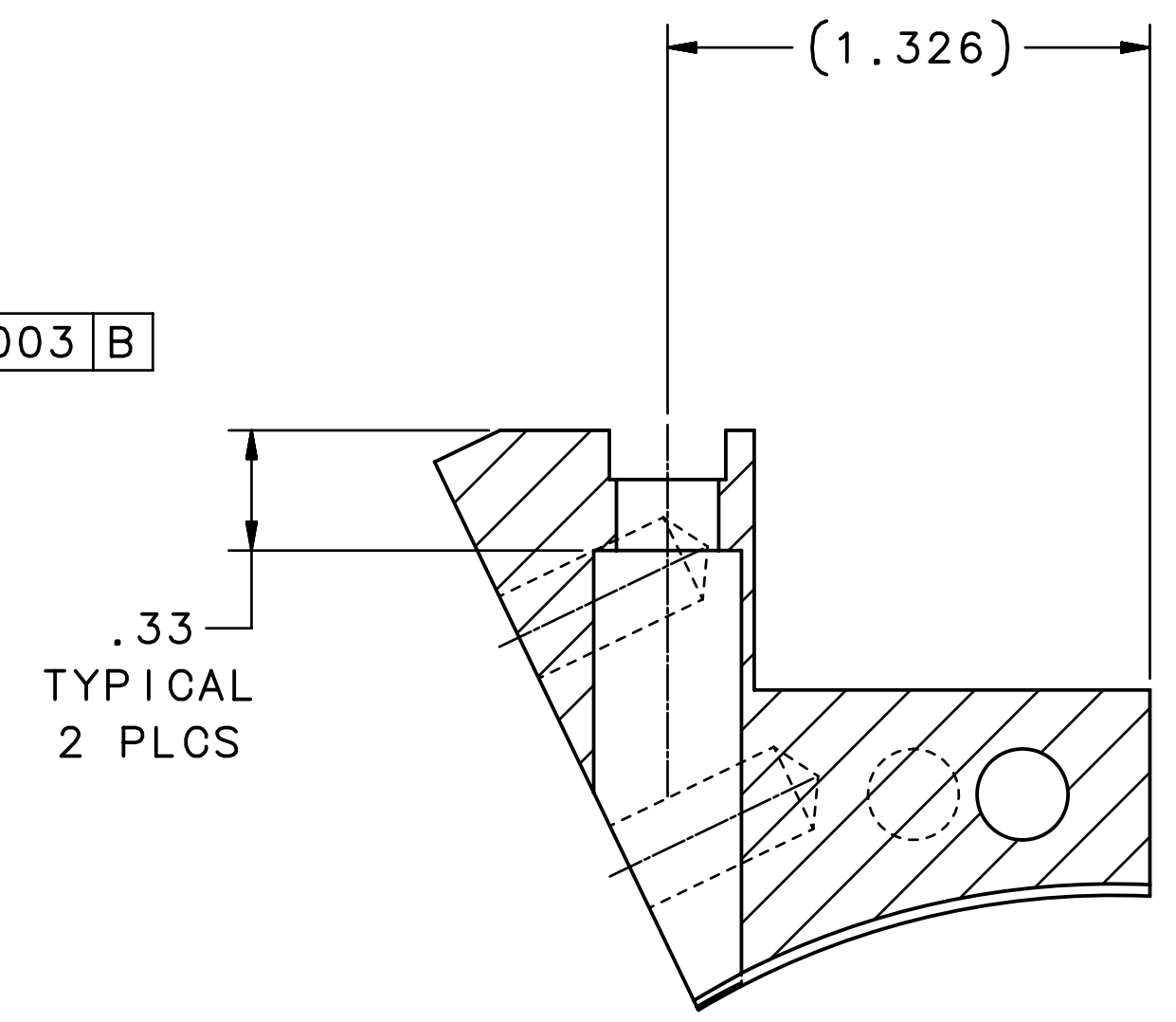
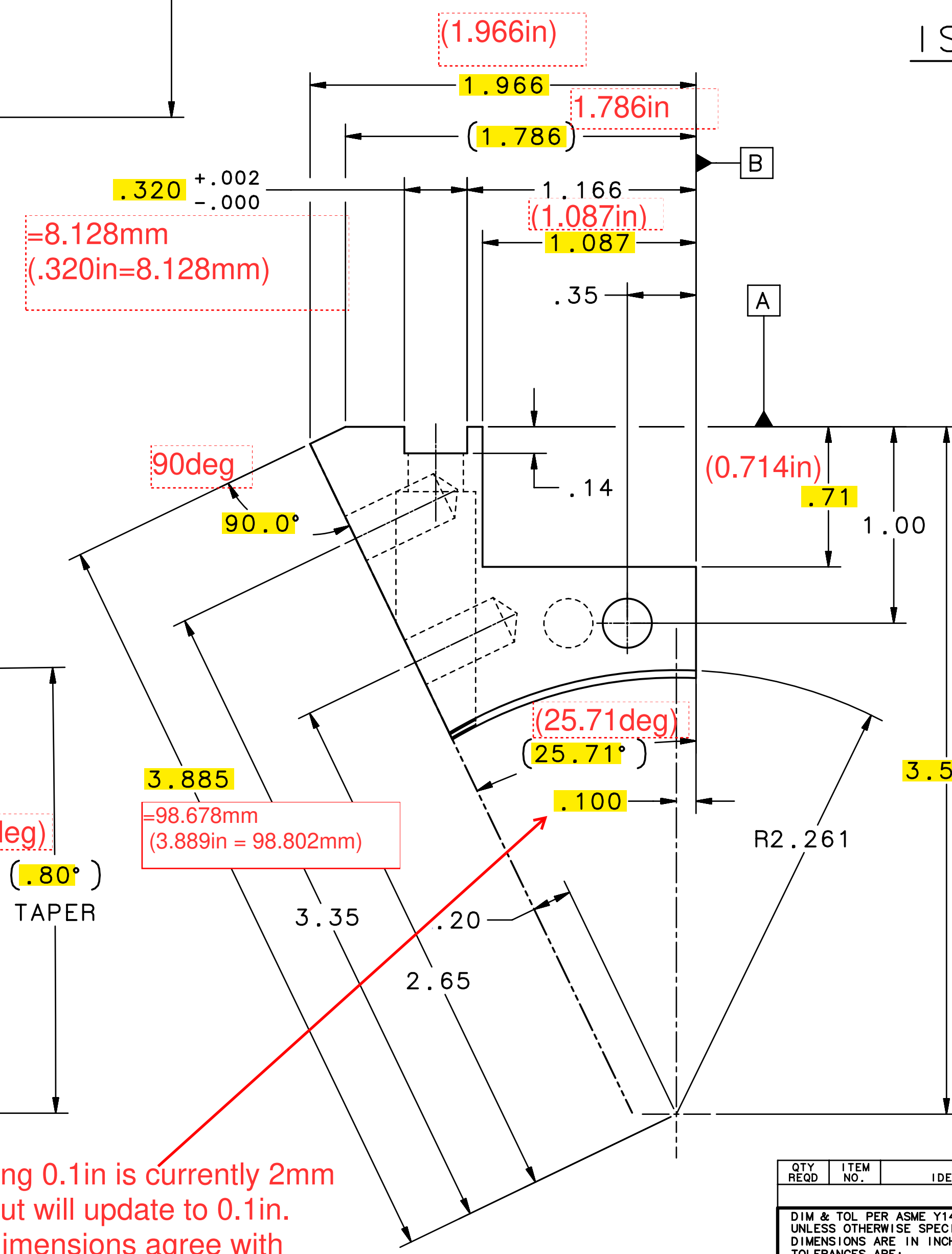
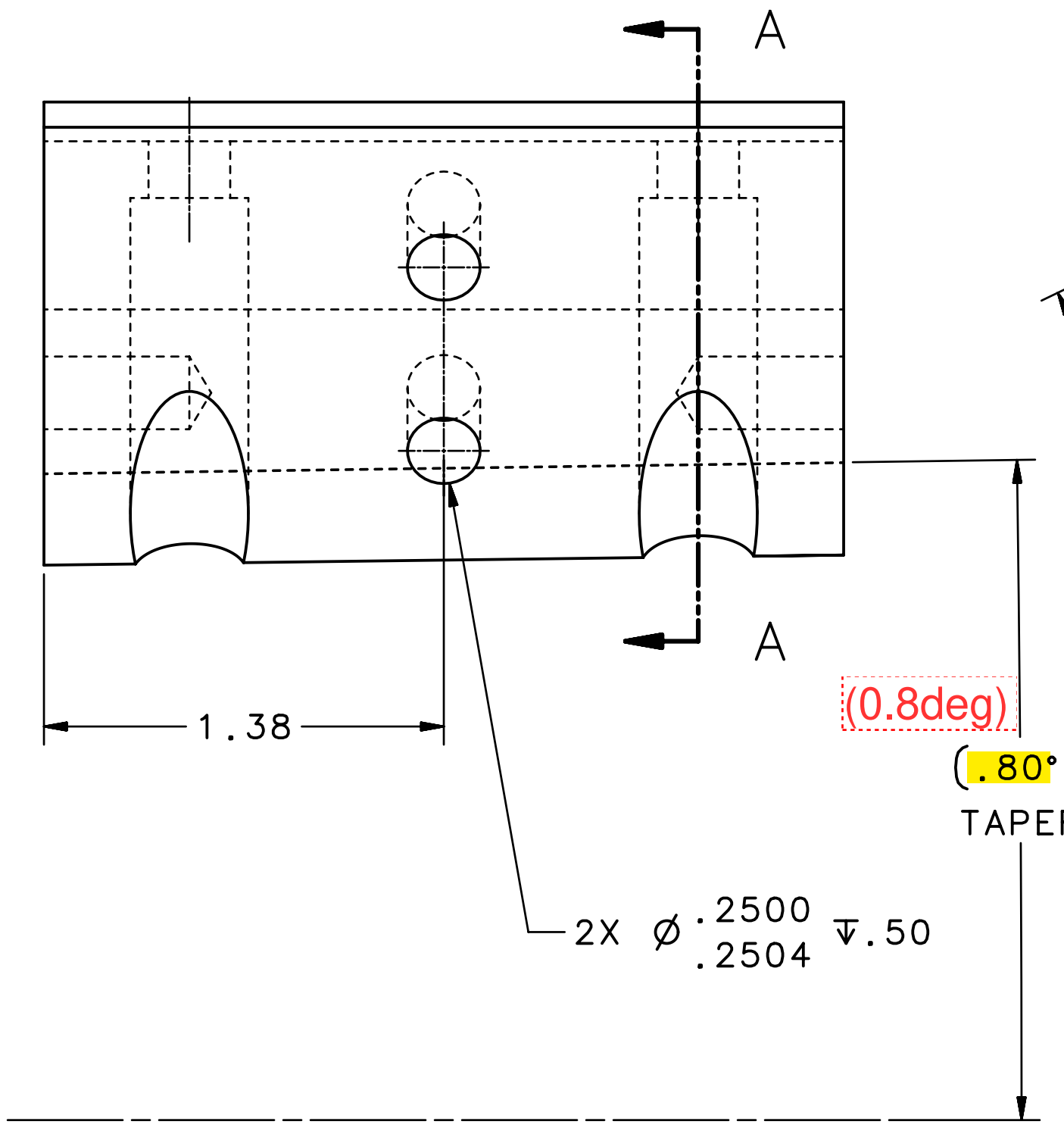
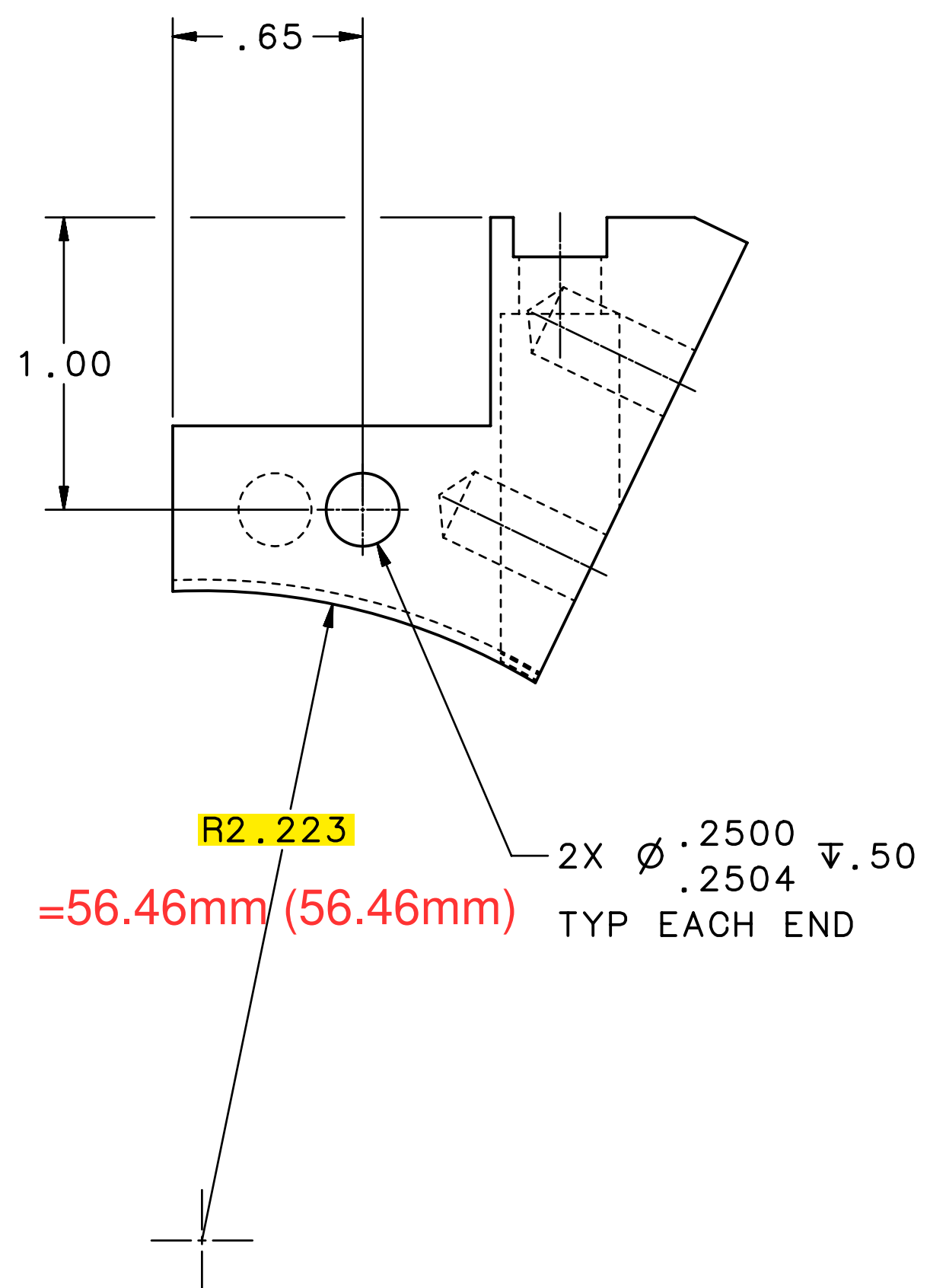
QTY REQD	ITEM NO.	PART OR IDENTIFYING NO.	NOMENCLATURE OR DESCRIPTION	MATERIAL SPECIFICATION	NOTES
PARTS LIST					
DIM & TOL PER ASME Y14.5 2009. UNLESS OTHERWISE SPECIFIED DIMENSIONS ARE IN INCHES. TOLERANCES ARE: FRACTIONS DECIMAL ANGLES ± 1/8 .X ± .01 ± .50 .XX ± .01 ± .50 .XXX ± .005		MATERIAL TUNGSTEN/COPPER W/Cu 90-10 SEE NOTE 1		United States Department of Energy Jefferson Lab Thomas Jefferson National Accelerator Facility Newport News Virginia	
THIRD ANGLE PROJECTION		FINISH UNLESS OTHERWISE NOTED MACHINE SURFACES 125 DEBURR & BREAK ALL SHARP EDGES		HALL A MOLLER EXPERIMENT DOWNSTREAM MAGNETS COLLIMATOR 6A-US SEGMENT	
DO NOT SCALE DRAWING		DATE 4/5/22		SIZE DWG. NO. D A09005-15-03-5420	REV. -
DRAWN D YOUNG		SCALE NONE		USED ON ASSY NO. A09005-15-03-5403 SHEET 1 OF 1	

REVISION HISTORY		
ZONE	REV	DESCRIPTION

2X $\varnothing .281^{+.009}_{-.002}$ THRU
 $\perp \varnothing .406$ ∇ SHOWN
 (FARSIDE)
 $\oplus \varnothing .020$ A B C



ISOMETRIC VIEW



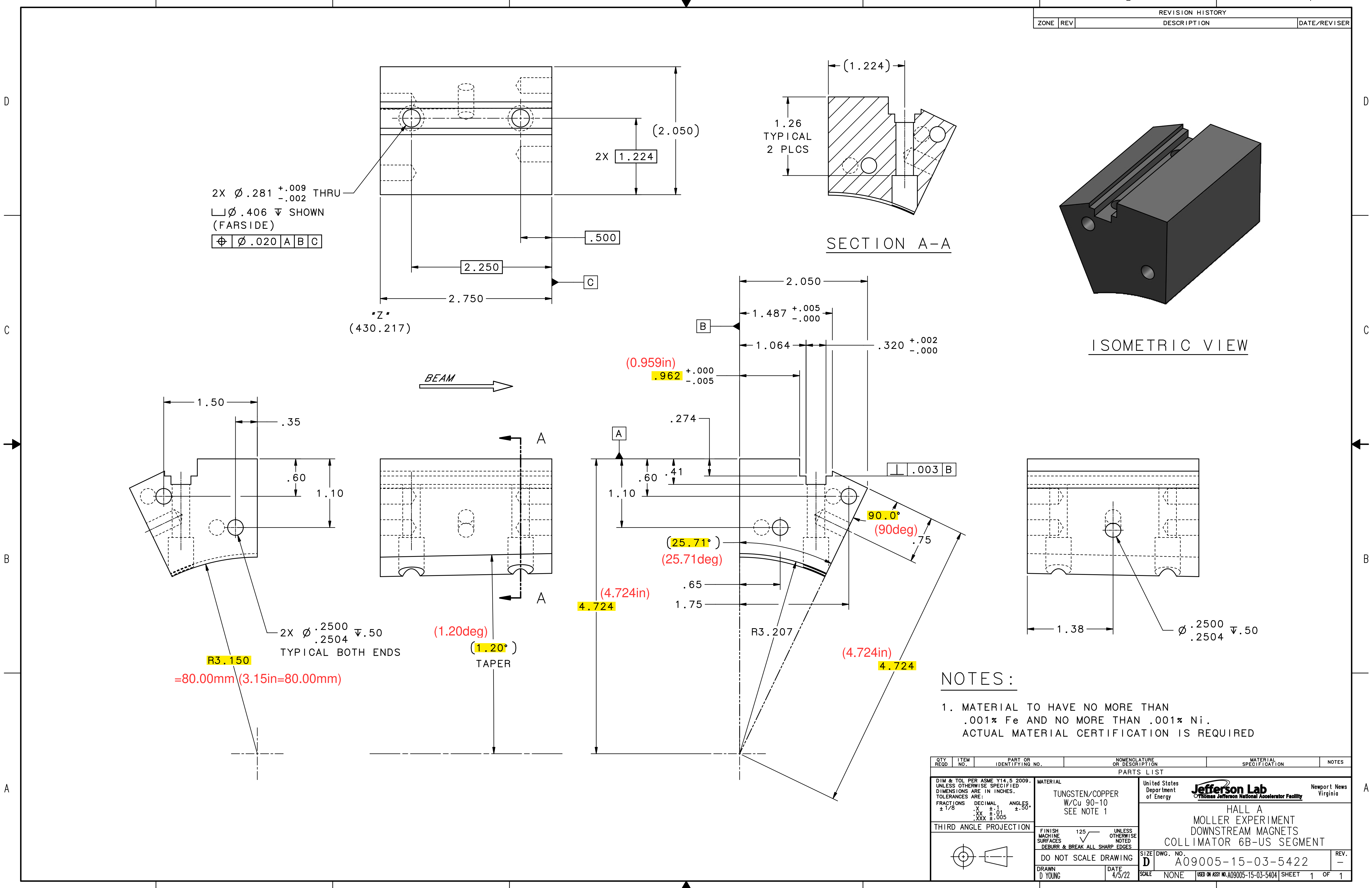
SECTION A-A

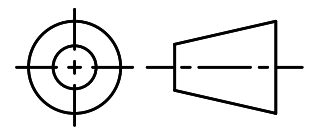
NOTES:
 1. MATERIAL TO HAVE NO MORE THAN .001% Fe AND NO MORE THAN .001% Ni. ACTUAL MATERIAL CERTIFICATION IS REQUIRED

The overhang 0.1in is currently 2mm in GDML, but will update to 0.1in. The other dimensions agree with 0.1in overlap

QTY REQD	ITEM NO.	PART OR IDENTIFYING NO.	NOMENCLATURE OR DESCRIPTION	MATERIAL SPECIFICATION	NOTES
PARTS LIST					
DIM & TOL PER ASME Y14.5 2009. UNLESS OTHERWISE SPECIFIED DIMENSIONS ARE IN INCHES. TOLERANCES ARE: FRACTIONS $\pm 1/8$ DECIMAL .XX $\pm .01$ ANGLES .XXX $\pm .005$		MATERIAL TUNGSTEN/COPPER W/Cu 90-10 SEE NOTE 1		United States Department of Energy Jefferson Lab Thomas Jefferson National Accelerator Facility Newport News Virginia	
FINISH MACHINE SURFACES DEBURR & BREAK ALL SHARP EDGES		FINISH 125 UNLESS OTHERWISE NOTED		HALL A MOLLER EXPERIMENT DOWNSTREAM MAGNETS COLLIMATOR 6A-DS SEGMENT	
DO NOT SCALE DRAWING DRAWN D YOUNG DATE 4/5/22		SIZE DWG. NO. A09005-15-03-5421 SCALE NONE		REV. - SHEET 1 OF 1	

REVISION HISTORY		
ZONE	REV	DESCRIPTION



QTY REQD	ITEM NO.	PART OR IDENTIFYING NO.	NOMENCLATURE OR DESCRIPTION	MATERIAL SPECIFICATION	NOTES
PARTS LIST					
DIM & TOL PER ASME Y14.5 2009. UNLESS OTHERWISE SPECIFIED DIMENSIONS ARE IN INCHES. TOLERANCES ARE: FRACTIONS DECIMAL ANGLES ± 1/8 .X ± .01 ± .50 .XX ± .01 ± .005 .XXX ± .005			MATERIAL TUNGSTEN/COPPER W/Cu 90-10 SEE NOTE 1		
FINISH MACHINE SURFACES UNLESS OTHERWISE NOTED DEBURR & BREAK ALL SHARP EDGES			United States Department of Energy Jefferson Lab <small>Thomas Jefferson National Accelerator Facility</small> Newport News Virginia		
THIRD ANGLE PROJECTION 			HALL A MOLLER EXPERIMENT DOWNSTREAM MAGNETS COLLIMATOR 6B-US SEGMENT		
DO NOT SCALE DRAWING DRAWN D YOUNG		DATE 4/5/22		SIZE DWG. NO. A09005-15-03-5422 REV. -	
SCALE NONE		USED ON ASSY NO. A09005-15-03-5404		SHEET 1 OF 1	

